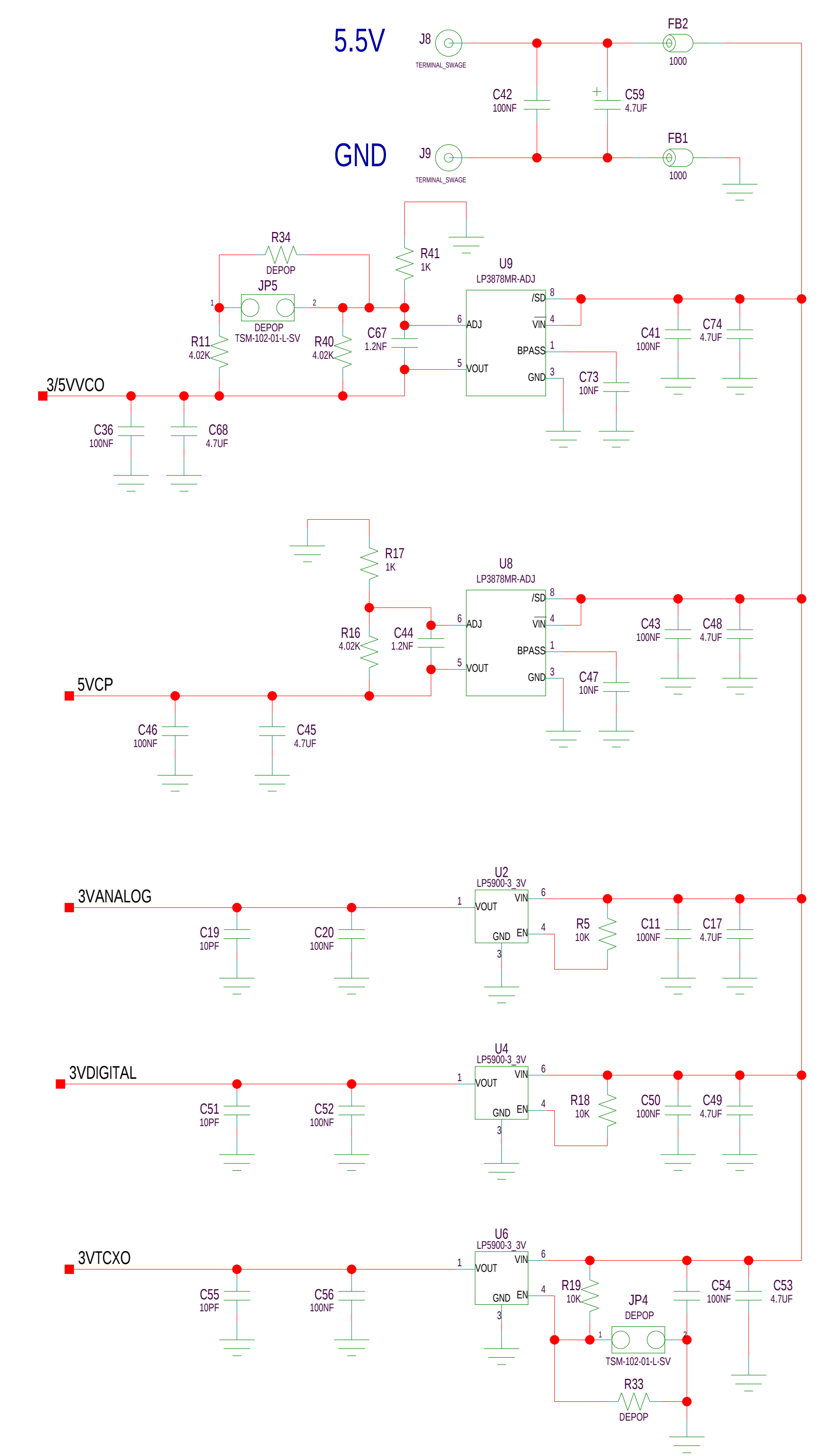
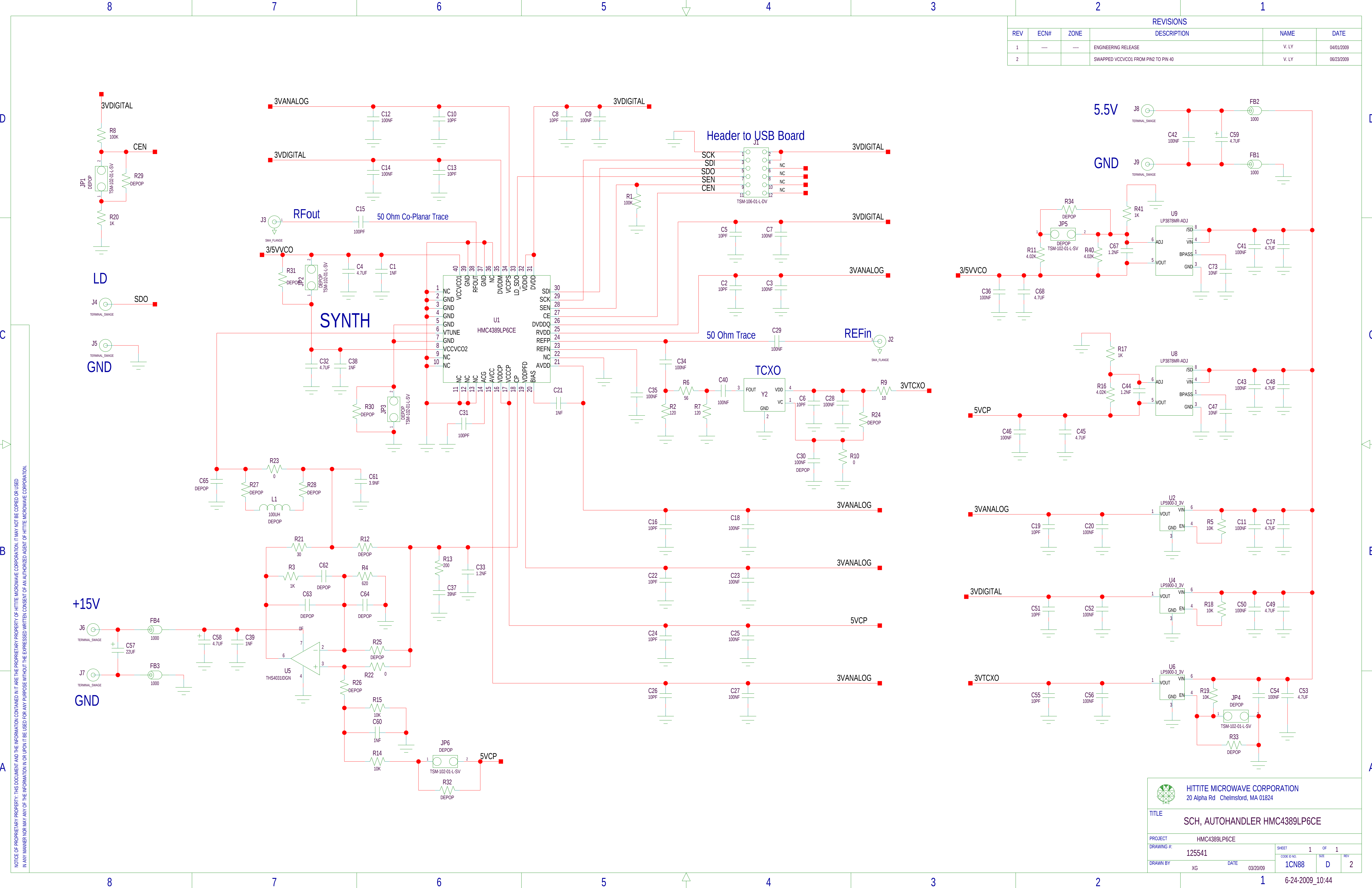



REVISIONS					
REV	ECN#	ZONE	DESCRIPTION	NAME	DATE
1	----	----	ENGINEERING RELEASE	V. LY	04/01/2009
2			SWAPPED VCCVCO1 FROM PIN2 TO PIN 40	V. LY	06/23/2009



NOTICE OF PROPRIETARY PROPERTY: THIS DOCUMENT AND THE INFORMATION CONTAINED IN IT ARE THE PROPRIETARY PROPERTY OF HITTITE MICROWAVE CORPORATION. IT MAY NOT BE COPIED OR USED IN ANY MANNER NOR MAY ANY OF THE INFORMATION IN OR UPON IT BE USED FOR ANY PURPOSE WITHOUT THE EXPRESSED WRITTEN CONSENT OF AN AUTHORIZED AGENT OF HITTITE MICROWAVE CORPORATION.


HITTITE MICROWAVE CORPORATION
 20 Alpha Rd Chelmsford, MA 01824

TITLE
 SCH, AUTOHANDLER HMC4389LP6CE

PROJECT	HMC4389LP6CE	SHEET	1	OF	1
DRAWING #:	125541	CODE ID NO.	1CN88	SIZE	D
DRAWN BY	XG	DATE	03/20/09	REV	2

6-24-2009_10:44